



Madison, Wisconsin

INDEX OF SHEETS

SHEET NO. 1	COVER SHEET
SHEET NO. P1	CONSTRUCTION ACCESS & EC PLAN
SHEET NO. P2	SITE PLAN

CITY OF MADISON

CITY ENGINEERING DIVISION

DEPARTMENT OF PUBLIC WORKS

PLAN OF PROPOSED IMPROVEMENT

RAILROAD ARCH CULVERT

REPAIR AT SOUTHWEST BIKE PATH

PUBLIC IMPROVEMENT PROJECT APPROVED

APPROVED DATE
JUNE 6, 2023

BY THE COMMON COUNCIL OF MADISON, WISCONSIN

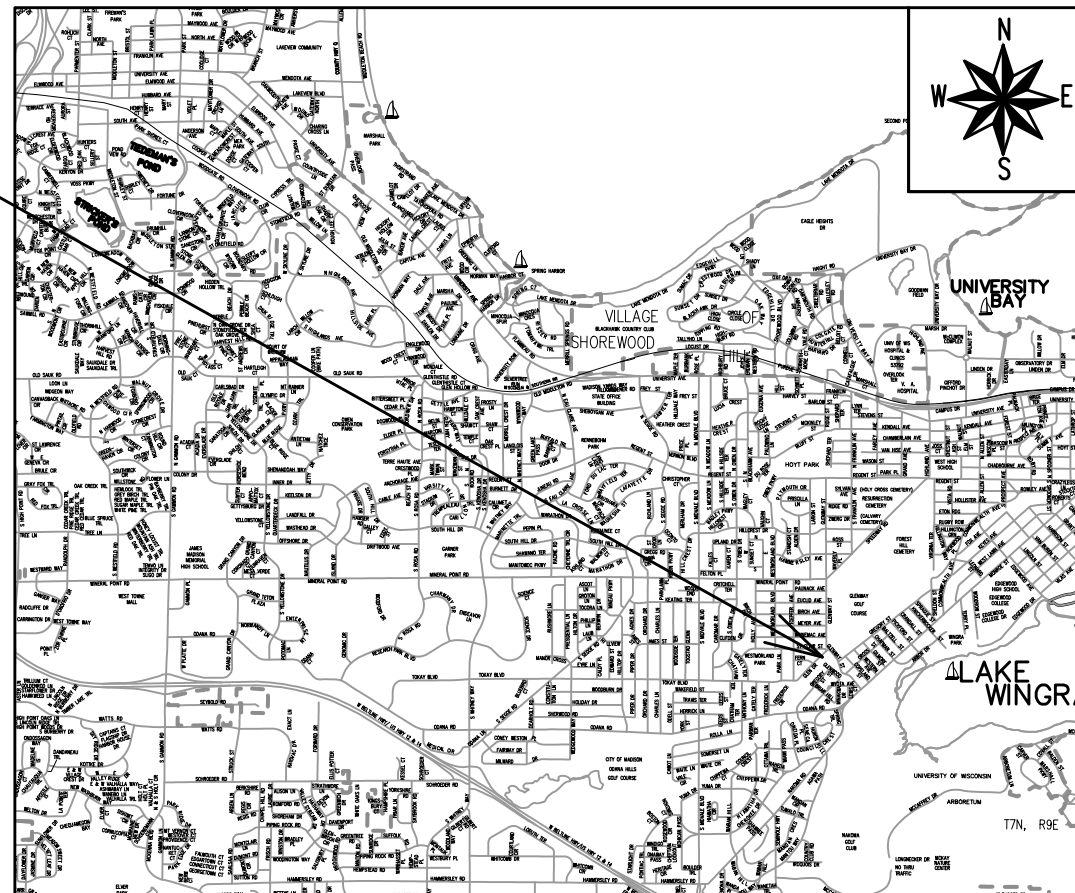
PUBLIC IMPROVEMENT DESIGN APPROVED BY:

James Wolfe
City Engineer

9/7/2023
Date

CITY PROJECT NO. 14369
CONTRACT NO. 9365

PROJECT LOCATION

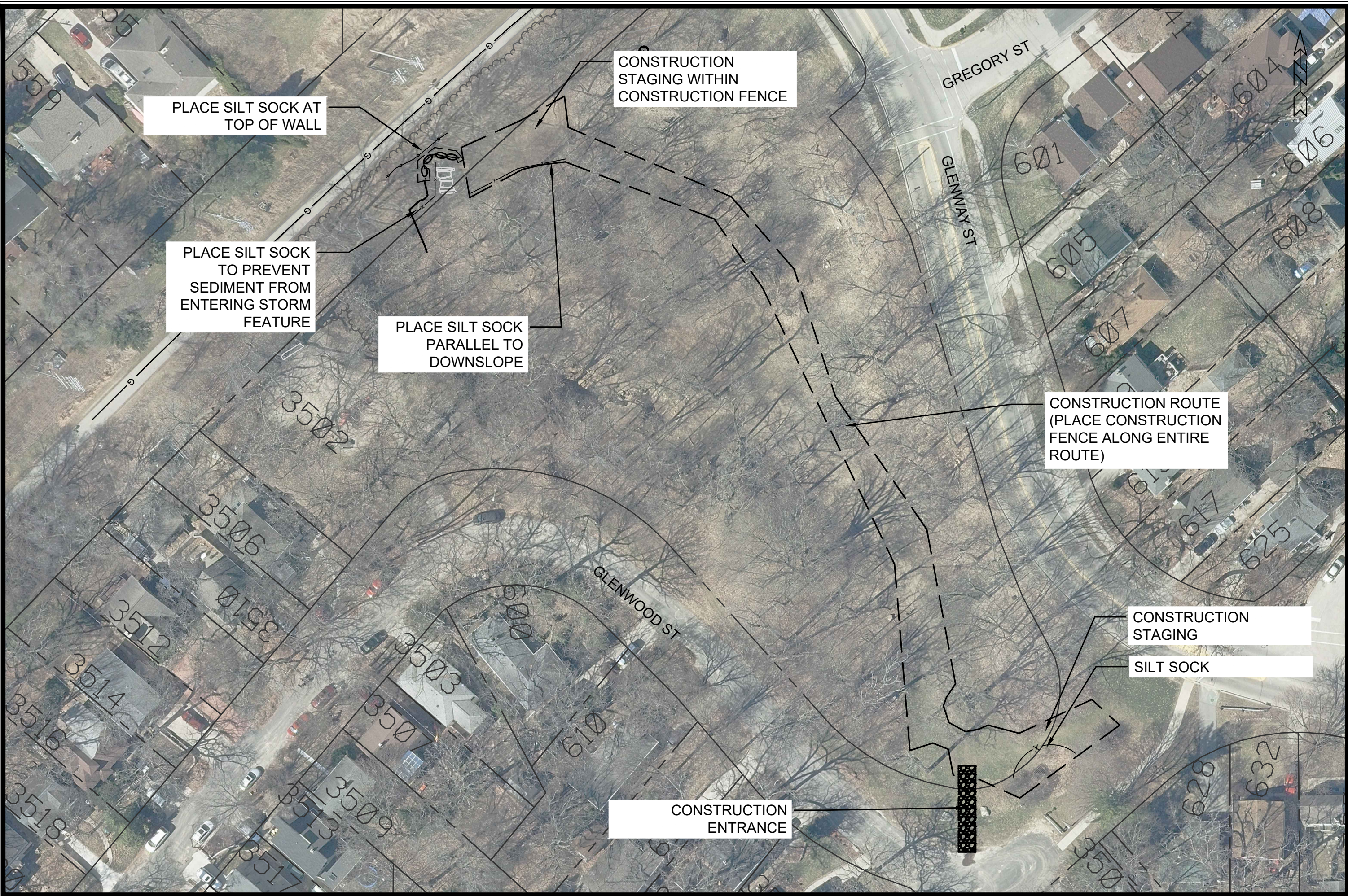


PLOT SCALE: 1:1_XREF

PLOT NAME: ---

REV. DATE: 7/24/2023 9:17 AM

ORIGINATOR: CITY_OF_MADISON



PLACE SILT SOCK AT TOP OF WALL

PLACE SILT SOCK TO PREVENT SEDIMENT FROM ENTERING STORM FEATURE

PLACE SILT SOCK PARALLEL TO DOWNSLOPE

CONSTRUCTION STAGING WITHIN CONSTRUCTION FENCE

CONSTRUCTION ROUTE (PLACE CONSTRUCTION FENCE ALONG ENTIRE ROUTE)

CONSTRUCTION STAGING

SILT SOCK

CONSTRUCTION ENTRANCE

MARK	REVISION	DATE	BY
###	###	###	###
###	###	###	###
###	###	###	###
###	###	###	###

Designed By: SCL
Date: 7/24/2023 9:21 AM
Scale: 1:50
14369

14369
 CONSTRUCTION ACCESS AND EROSION CONTROL
 RAILROAD ARCH CULVERT REPAIR AT SOUTHWEST BIKEWAY, DANE COUNTY, WI
 M:\DESIGN\Projects\14369\CAD\Wall\14369_Wall.dwg
 9365
 CONTRACT NO:

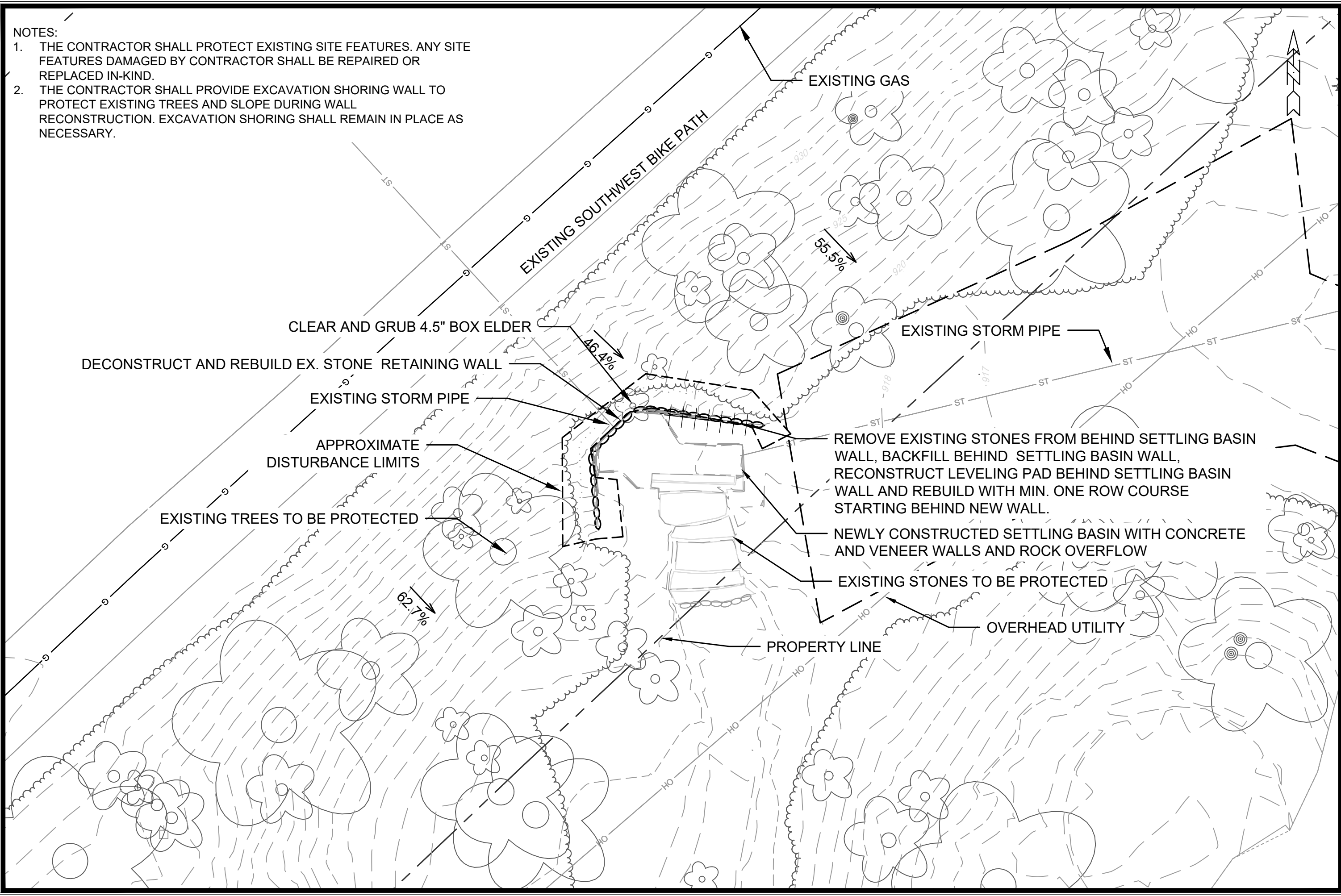


14369
 P-1

C-2

NOTES:

1. THE CONTRACTOR SHALL PROTECT EXISTING SITE FEATURES. ANY SITE FEATURES DAMAGED BY CONTRACTOR SHALL BE REPAIRED OR REPLACED IN-KIND.
2. THE CONTRACTOR SHALL PROVIDE EXCAVATION SHORING WALL TO PROTECT EXISTING TREES AND SLOPE DURING WALL RECONSTRUCTION. EXCAVATION SHORING SHALL REMAIN IN PLACE AS NECESSARY.



MARK	REVISION	DATE	BY
###	###	###	###
###	###	###	###
###	###	###	###
###	###	###	###

Designed By: SCL
Date: 7/24/2023 9:22 AM
Scale: 1/20
14369
C-2

SITE PLAN
RAILROAD ARCH CULVERT REPAIR AT SOUTHWEST BIKEWAY, DANE COUNTY, WI
 M:\DESIGN\Projects\14369\CAD\Wall\14369_Wall.dwg
14369
9365
CONTRACT NO: